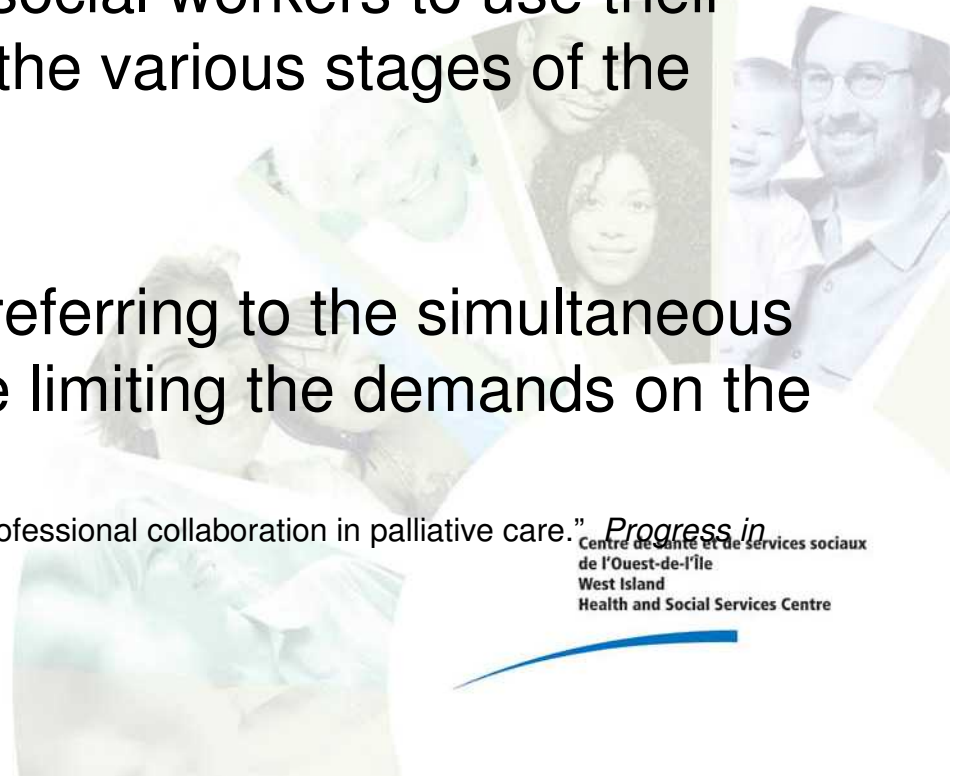


Social Work Perspective

- Normalizes the role of the social worker
- Allows the creation of the therapeutic relationship from the beginning and facilitates the social workers to use their counselling skills throughout the various stages of the illness
- "Consultation Etiquette" (1) - referring to the simultaneous gathering of information while limiting the demands on the clients

(1) Blacker, Susan & Deveau, Colette. "Social work and interprofessional collaboration in palliative care." *Progress in Palliative Care* 18.4 (2010):237-243



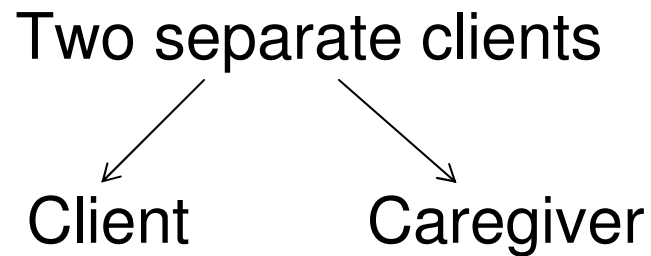
Social Work Perspective

- Promotes the Interdisciplinary Approach
- Allows more flexibility and continuity in the case management
- Highlights the role of the Caregiver

Parallel Losses



Parallel Losses



- Both may have the same feelings
- They may not be experiencing the same feelings at the same time
- They may have conflicting feelings
- They may have different feelings



Contributing Factors

Personal factors

Age, lifestyle, family dynamics and history, resources, past experiences and coping mechanisms, occupation, presence of caregivers, ...

Medical factors:

Type of symptoms, stage of illness, progression of the disease...

CLIENT

Ethical factors:

Values, beliefs, preferences, culture, ...

Administrative factors

Waiting lists, rules and regulation, ...

Factors affecting coping

- Age
- Culture
- Values
- Lifestyle
- Past life experiences and coping mechanisms



Factors affecting coping (continued)

- Family dynamics
- Resources
- Stage of the illness (2)

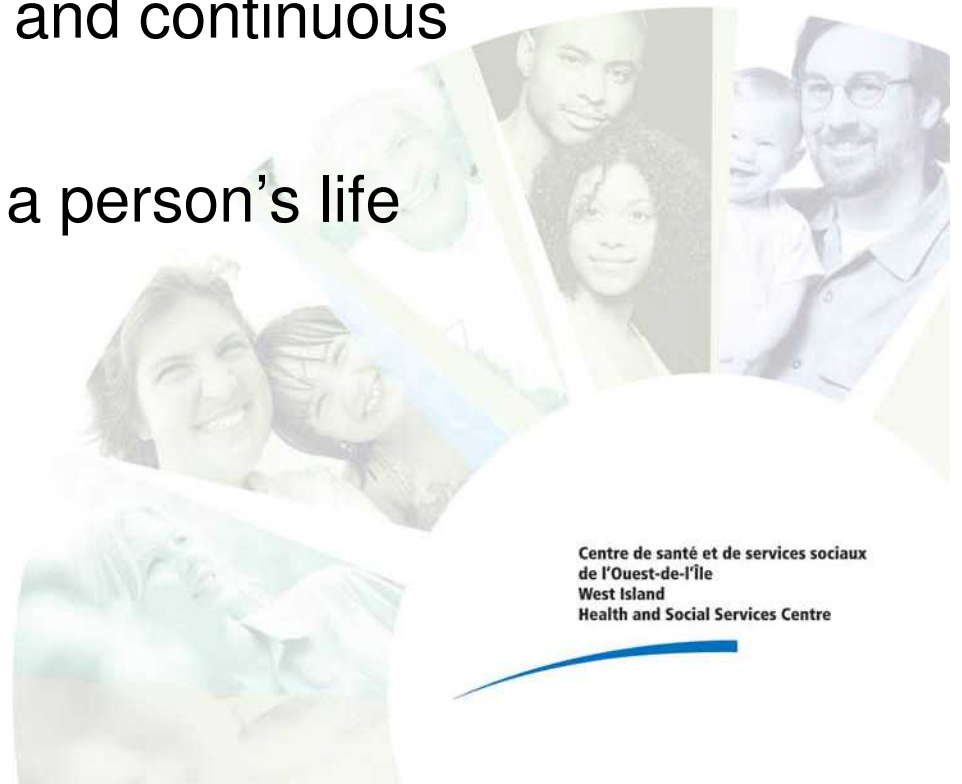
These factors will determine how clients react and thus will help define social work interventions.

(2) Doka, Kenneth J. (2009). *Counseling Individuals With Life-Threatening Illness*. New York, NY: Springer Publishing Company.



The Impact of ALS

- ALS is a degenerative illness
- The losses can be numerous and continuous
- It can affect many aspects of a person's life



The Impact of ALS

- Physical
- Social
- Emotional/Psychological
- Financial
- Spiritual

UN RÉSEAU COMPLICE DE VOTRE BIEN-ÊTRE!
PARTNERS IN YOUR WELL-BEING!



Centre de santé et de services sociaux
de l'Ouest-de-l'île
West Island
Health and Social Services Centre

The social worker's involvement

- The social worker attends to the emotional reactions to the losses
- There is a need for a consistent and regular social work involvement



Clinical Implications for Social Workers

Issues

1. Grief and bereavement
2. End-of-life issues
3. Caregiving



Clinical Implications for Social Workers

Factors in ALS

- Snowballing losses
- Uncertainty of the time left
- Acute awareness of the finality

Clinical Implications for the Social Workers

Feelings

- Shock
- Denial
- Anger
- Fear
- Anticipatory grief
- Chronic sorrow
- Depression
- Despair

UN RÉSEAU COMPLICE DE VOTRE BIEN-ÊTRE!
PARTNERS IN YOUR WELL-BEING!



Centre de santé et de services sociaux
de l'Ouest-de-l'île
West Island
Health and Social Services Centre

Clinical Implications for the Social Workers

Strategies

- Bereavement counselling
- Empowerment
- Couple and family counselling
- Crisis intervention
- Life review



Centre de santé et de services sociaux
de l'Ouest-de-l'île
West Island
Health and Social Services Centre

Clinical Implications for the Social Workers

Counselling

- Offers the opportunity for reflection and insight
- Helps to identify the issues and their scope
- Find effective ways to cope

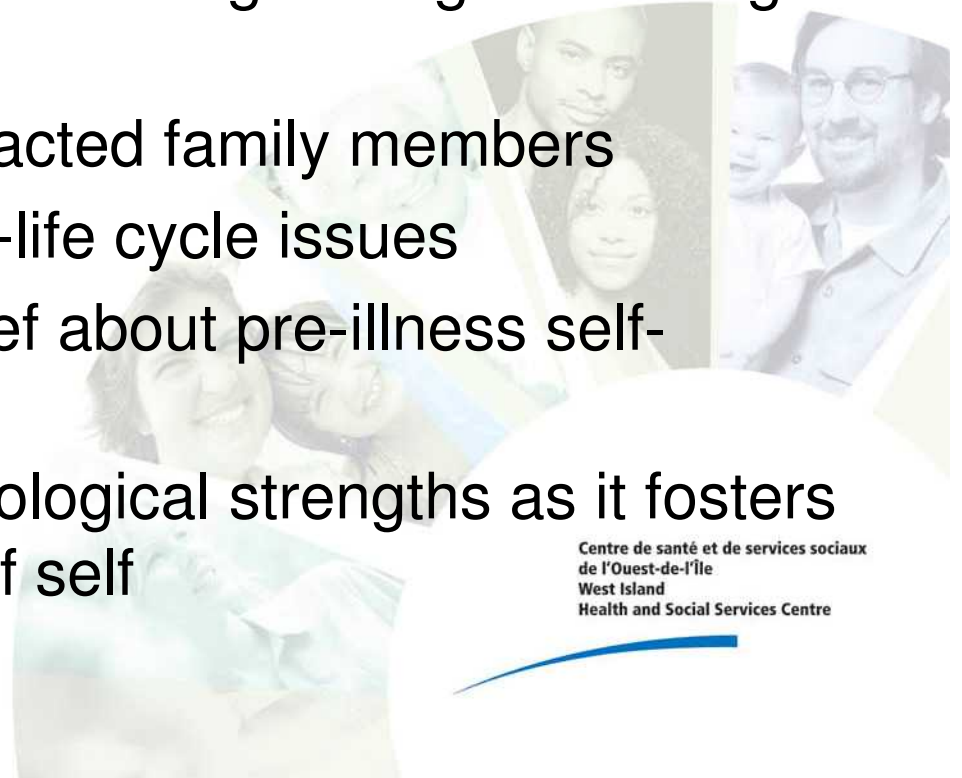


Clinical implications for the social workers

1. *Grief and Bereavement*

The story needs to be told

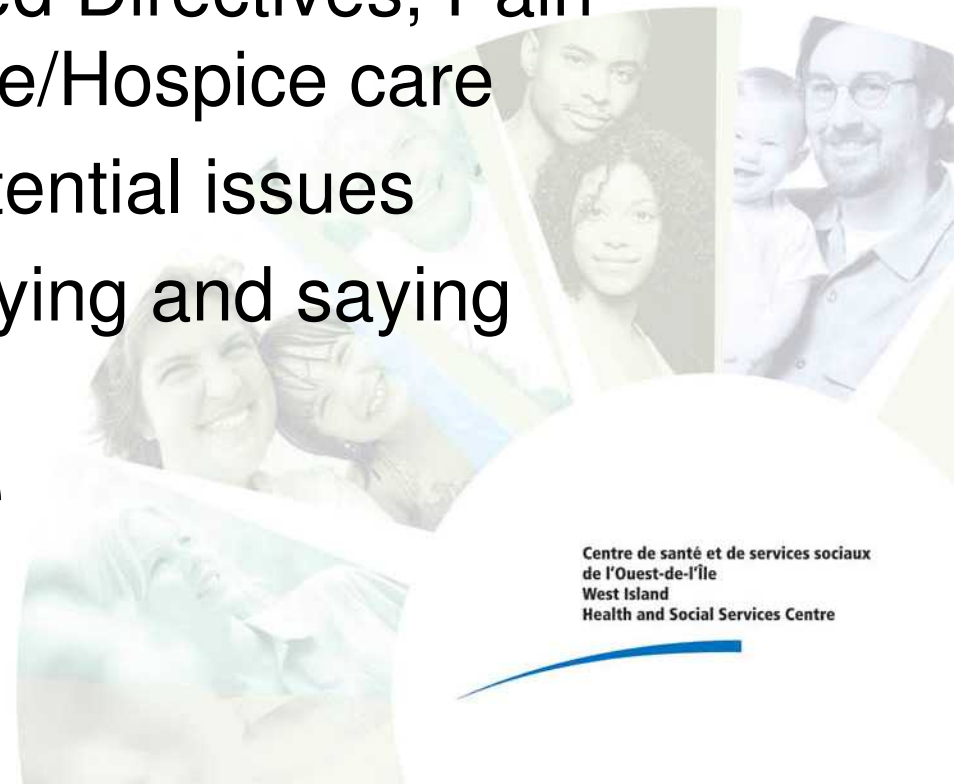
- Story as a mechanism in ventilating feeling and facing fears
- Explore how ALS has impacted family members
- Developmental and family-life cycle issues
- Acknowledge person's grief about pre-illness self-image
- Emphasize existing psychological strengths as it fosters the concept of continuity of self



Clinical Implications for the Social Workers

2. End-of-Life Issues

- Decide about Advanced Directives, Pain Management, Palliative/Hospice care
- Discussion about existential issues
- Communicate about dying and saying goodbyes
- Continuity of presence

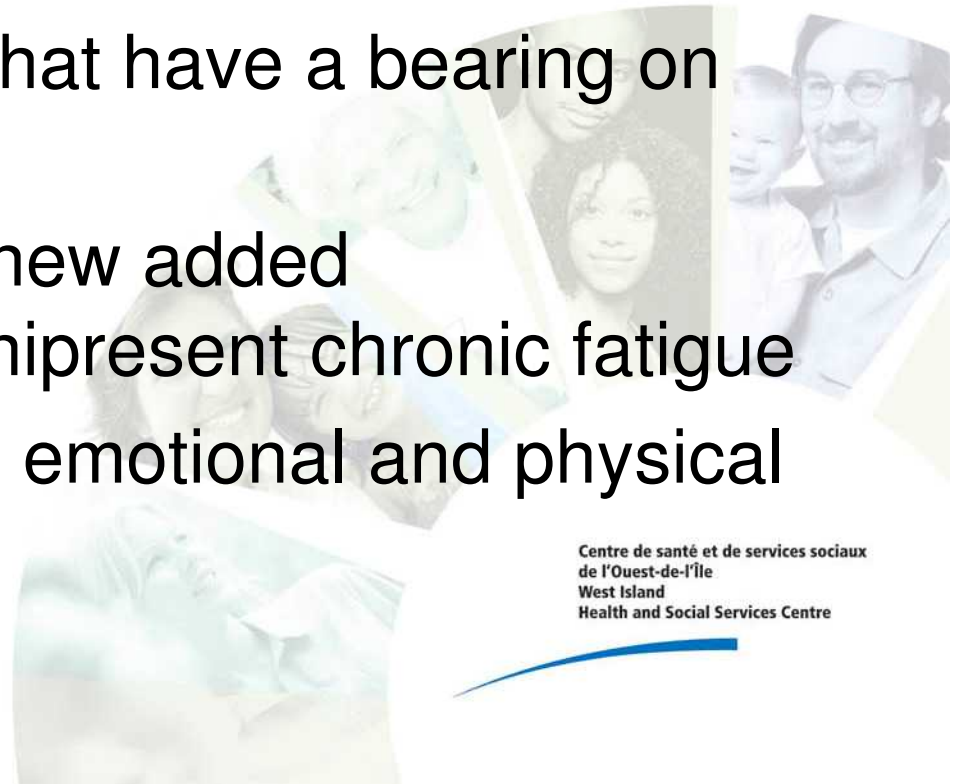


Centre de santé et de services sociaux
de l'Ouest-de-l'île
West Island
Health and Social Services Centre

Clinical Implications for the Social Workers

3. *Caregivers*

- Grief, bereavement and feelings of despair as the loved one declines physically
- Unresolved past issues that have a bearing on the present
- Social roles strain with new added responsibilities and omnipresent chronic fatigue
- Decline in health due to emotional and physical strains of caregiving



Centre de santé et de services sociaux
de l'Ouest-de-l'île
West Island
Health and Social Services Centre

Clinical Implications for the Social Workers

3. **Caregivers** (continued)

- Acknowledgement of the caregiver's role
- Grief counselling
- Couple and family counselling to address the past issues that influence present situation
- Maximize the use of formal and informal support systems





UN RÉSEAU COMPLICE DE VOTRE BIEN-ÊTRE!
PARTNERS IN YOUR WELL-BEING!

Centre de santé et de services sociaux
de l'Ouest-de-l'île
West Island
Health and Social Services Centre

QUESTIONS?

UN RÉSEAU COMPLICE DE VOTRE BIEN-ÊTRE !
PARTNERS IN YOUR WELL-BEING!



Centre de santé et de services sociaux
de l'Ouest-de-l'île
West Island
Health and Social Services Centre

Articles

- ❑ D.D'Amour et al.(may 2005).The conceptual basis for interprofessional collaboration: Core concepts and theoretical frameworks. Journal of Interprofessional Care, Supplement 1: 116-131
- ❑ Blatzheim, K, CMT, NMT(2009). Interdisciplinary palliative care, including massage, in treatment of amyotrophic lateral sclerosis. Journal of Bodywork & Movement Therapies 13, 328-335.
- ❑ Orchard C.A., Curran V., Kabene S. Creating a culture of interdisciplinary collaborative professional practice. Med Educ Online (serial online) 2005.1-13
- ❑ Revues Objectif Prévention (site ASSTSAS)

Ressources et sites internet

- ❑ [www.centreinterval.qc.ca/client/documentation/Comparaison Stair Track et Scalamobile 2007 .pdf](http://www.centreinterval.qc.ca/client/documentation/Comparaison_Stair_Track_et_Scalamobile_2007.pdf) Comparaison du stair track et du scalamobile
- ❑ Guide de gestion de l'Agence de Santé de Montréal
06_agence_aidesmaterielles@ssss.gouv.qc.ca
- ❑ Répertoire des aides techniques du CLSC Pierrefonds
- ❑ http://www.habitation.gouv.qc.ca/espace_partenaires.html#exemples
- ❑ Action-Habitation: Exemples d'adaptations
- ❑ Fiches PDSB www.asstsas.qc.ca/fiches-pdsb.html
- ❑ Des équipements qui facilitent le déplacement de personnes:
❑ www.asstsas.qc.ca/equipements-deplacement-personnes.html
- ❑ Guide des pratiques sécuritaires lors de l'utilisation du lève-personne:
❑ <http://www.csssvc.qc.ca/telechargement.php?id=469>



Remerciements

- Merci aux personnes qui nous ont permis de prendre des photos de leur domicile.
- Merci à Rebecca Todor pour avoir aidé avec la revue de la littérature alors qu'elle faisait un stage au CLSC Lac-Saint-Louis.
- Merci à Mme Sheila Bonney, chef d'administration de programme au CLSC Lac-Saint-Louis pour son support continu.

